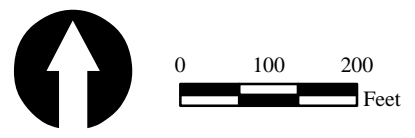


Source: Esri, DigitalGlobe, GeoEye, i-cubed, USDA, USGS, AEX, Getmapping, Aerogrid, IGN, IGP, swisstopo, and the GIS User Community

SOURCE: Jacobs Engineering (10/2014), Epic Land Solutions, Inc. (10/2014)



Legend:

- Proposed Improvements
- Parcels with Full Acquisition
- Parcels with Partial Acquisition

**Mid County Parkway
Property Map**

08-RIV-MCP PM 0.0/16.3; 08-RIV-215 PM 28.0/34/3
EA 08-0F3200 (PN 080000125)



Appendix O-2