

## **Fact Sheet: Gas Bubbling Near Plugged and Abandoned Well #08004**

GPS Coordinates (NAD83): 28.455487, -98.291357

Approximate Elevation: 198 ft

Current Reservoir Elev (5/19/2017): 199.36 ft

Top of Conservation Elev: 220.5 ft

Exposed or Underwater: Underwater

Mineral Interest: Privately owned, partially  
subordinated

### Nearest Documented Well:

API Number: None (may predate API Numbers)

Well Name & Number: Unknown

Type: Dry Hole

Approximate Elevation: 198 ft

GIS Coordinates (NAD83) from Texas Railroad

Commission Database: 28.455917, -98.290624

Plugging History: Plugged by operator (Midland  
Investment Company)





## **Fact Sheet: Gas Bubbling Near Plugged and Abandoned Well #08010**

GPS Coordinates (NAD83): 28.459148, -98.292898

Approximate Elevation: 194 ft

Current Reservoir Elev (5/19/2017): 199.36 ft

Top of Conservation Elev: 220.5 ft

Exposed or Underwater: Underwater

Mineral Interest: Privately owned, partially  
subordinated

### Nearest Documented Well:

API Number: None (may predate API Numbers)

Well Name & Number: W.G. & A.V. 1

Type: Dry Hole

Approximate Elevation: 198 ft

GIS Coordinates (NAD83) from Texas Railroad

Commission Database: 28.455917, -98.290624

Plugging History: Plugged by operator (Mid. Buzzini?)

plugged well #08010  
south side of lake.



Well #08010  
GPS Coordinates for Bubbling



0 250 500 Feet

## **Fact Sheet: Gas Bubbling Near Plugged and Abandoned Well #33008**

GPS Coordinates (NAD83): 28.492103, -98.346489

Approximate Elevation: 160 ft

Current Reservoir Elev (5/19/2017): 199.36 ft

Top of Conservation Elev: 220.5 ft

Exposed or Underwater: Underwater

Mineral Interest: Partial Federal Minerals

[No Photo Available]

### Nearest Documented Well:

API Number: None (may predate API Numbers)

Well Name & Number: Unknown

Type: Unknown

Approximate Elevation: 170 ft

GIS Coordinates (NAD83) from Texas Railroad

Commission Database: 28.491865, -98.345763

Plugging History: Plugged by C.G.C. Well Salvaging, Inc.  
(Reclamation Contractor)



## **Fact Sheet: Gas Bubbling Near Plugged and Abandoned Well #36003**

GPS Coordinates (NAD83): 28.49167, -98.352123

Approximate Elevation: 175 ft

Current Reservoir Elev (5/19/2017): 199.36 ft

Top of Conservation Elev: 220.5 ft

Exposed or Underwater: Underwater

Mineral Interest: Partial Federal Minerals

[No Photo Available]

### Nearest Documented Wells:

API Number: None (may predate API Numbers)

Well Name & Number: Glass #8

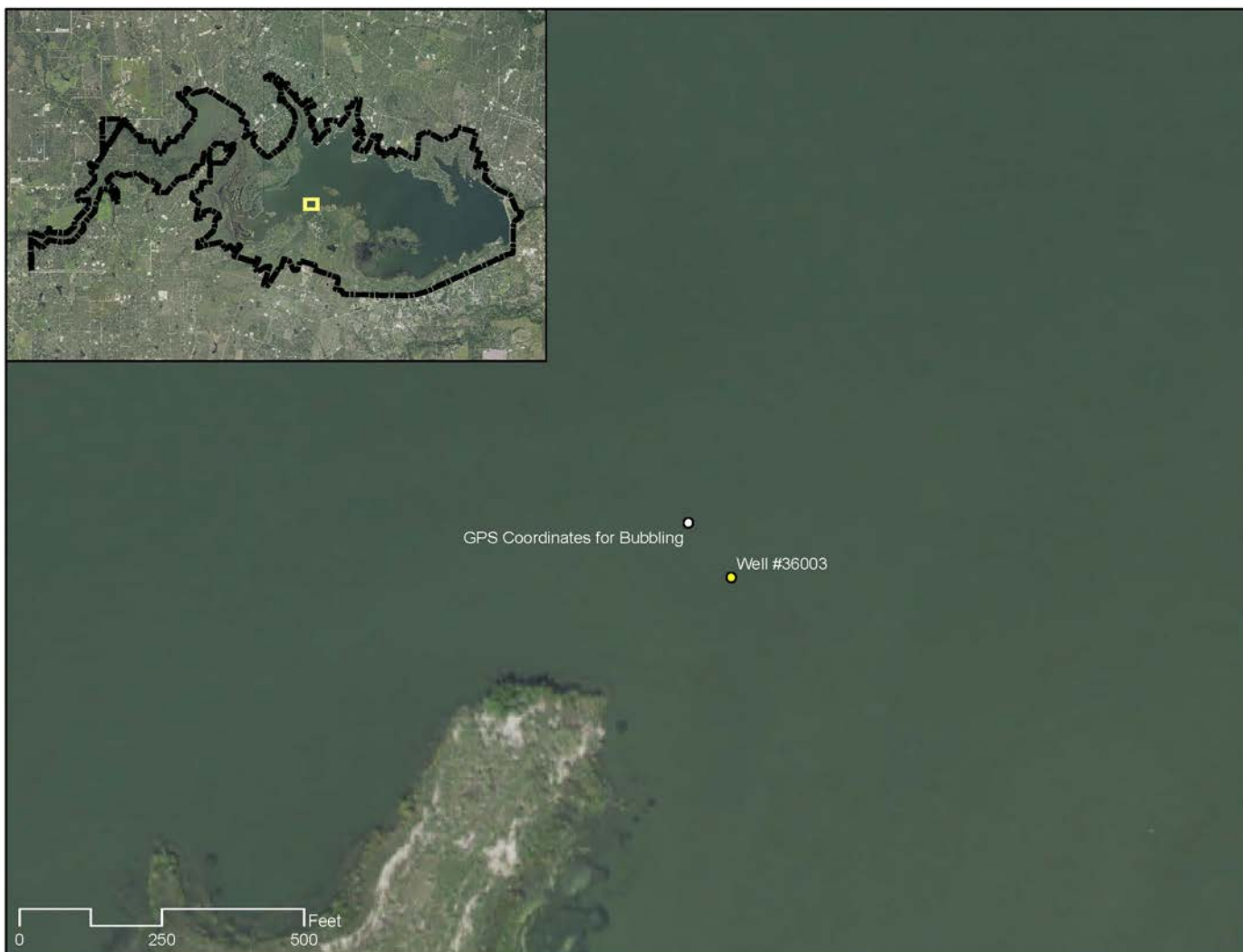
Type: Unknown

Approximate Elevation: 175 ft

GIS Coordinates (NAD83) from Texas Railroad

Commission Database: No RRC Coordinates

Plugging History: Plugged by C.G.C. Well Salvaging, Inc.  
(Reclamation Contractor)





## Fact Sheet: Gas Bubbling Near Plugged and Abandoned Well #56027

GPS Coordinates (NAD83): 28.480869, -98.377001  
Approximate Elevation: 182 ft  
Current Reservoir Elev (5/19/2017): 199.36 ft  
Top of Conservation Elev: 220.5 ft  
Exposed or Underwater: Underwater  
Mineral Interest: 100% Federal Minerals

### Nearest Documented Well:

API Number: None (may predate API Numbers)  
Well Name & Number: Unknown  
Type: Dry Hole  
Approximate Elevation: 182 ft  
GIS Coordinates (NAD83) from Texas Railroad  
Commission Database: 28.481156, -98.376658  
Plugging History: Plugged by operator (unknown)



## **Fact Sheet: Gas Bubbling Near Plugged and Abandoned Well API #297-32071**

GPS Coordinates (NAD83): 28.468987, -98.3301

Approximate Elevation: 205 ft

Current Reservoir Elev (5/19/2017): 199.36 ft

Top of Conservation Elev: 220.5 ft

Exposed or Underwater: Currently Exposed

Mineral Interest: 100% Federal Minerals

### Nearest Documented Wells:

API Number: 297-32071

Well Name & Number: GCO-Haag, Richard 4

Type: Dry Hole

Approximate Elevation: 205 ft

GIS Coordinates (NAD83) from Texas Railroad

Commission Database: 28.466950, -98.390119

Well Plugging History: Plugged by operator  
(McFadden Oil Corporation)

